



**M:BF** MEDICAL  
BENEVOLENCE  
FOUNDATION

# IMPACT REPORT

— 2021 —



# 25,865

DELIVERIES OF NEW BABIES



# 775



NURSING GRADUATES



# 12

HOSPITALS

# 75,548

INPATIENT VISITS



# 624,976

OUTPATIENT VISITS

# 67

CLINICS



# 10



NURSING SCHOOLS



# 2,914

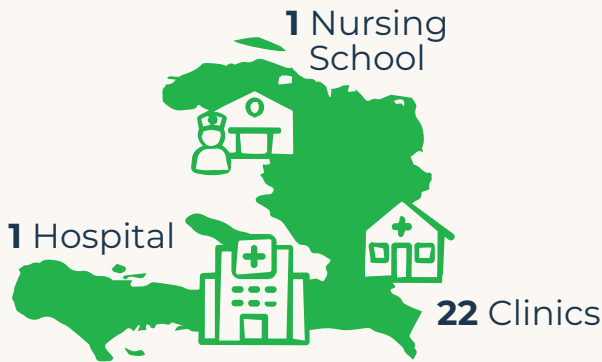
NURSING STUDENTS ENROLLED

# 91

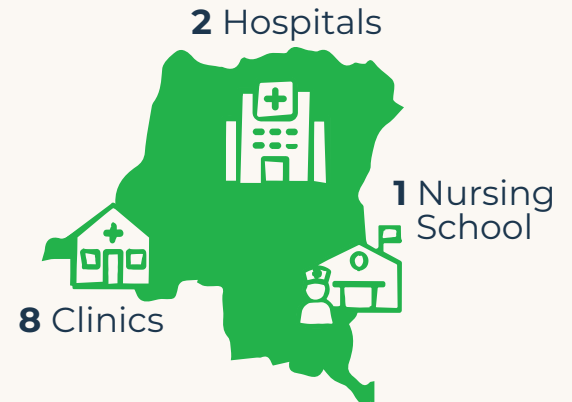
MARY K NURSING SCHOLARS

# 13%

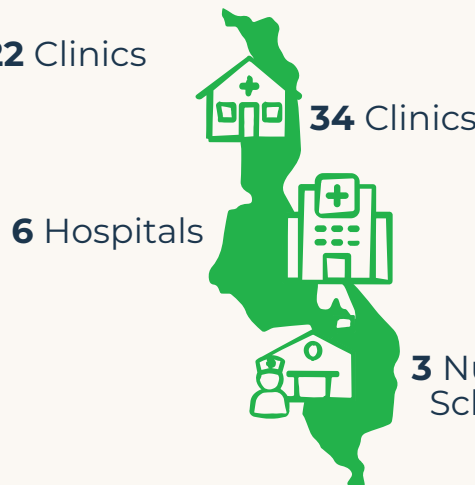
ADMINISTRATIVE OVERHEAD



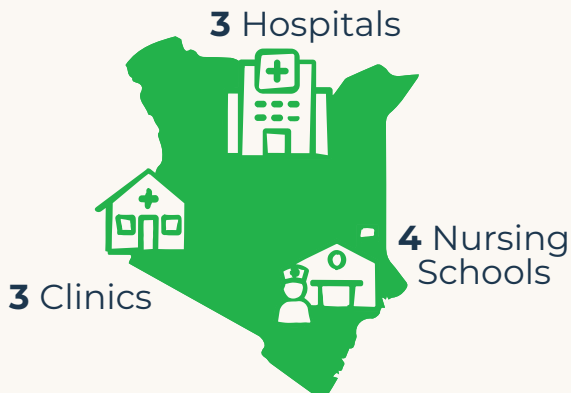
## HAITI



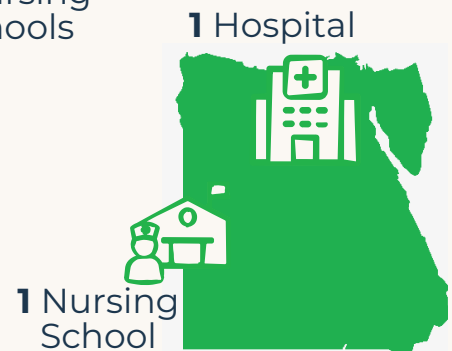
## DR CONGO



## MALAWI



## KENYA



## EGYPT



# Martha's Story

Martha Mwanda was just five years old when her grandmother rushed her to Embangweni Hospital in Malawi for severe burns. Hot oil from a stove had accidentally spilled down Martha's dress, caught her dress on fire, and caused third-degree burns over the lower half of her little body. Burns are all too common in Eastern Africa, where open cooking fires and kerosene stoves are used in most households.

Having access to a surgeon skilled in treating burns made all the difference for Martha. During her treatment, doctors and nurses took special care with their patient, cleaning her wounds to promote healing and prevent infections. The chaplaincy team at Embangweni visited Martha and prayed for her all during her hospital stay. Today, Martha can walk and play again.

Because of your ministry, patients like Martha can get the life-saving care they need, regardless of their ability to pay. The physical and spiritual care Martha received is a priceless gift from MBF's donor partners. More patients like her will receive care from trained surgeons because of the surgical residency within the Christian Medical Network in Malawi.



“One thing I particularly admire about MBF is that it takes a **holistic approach to medical missions** in developing countries...The focus has become a transition to **empowering and educating professionals in the country** to be able to take over the ministry itself.”

— **EVE TOLLEY**, *MBF Long-time Donor*



# REVOLUTIONIZING Medical Mission

The world is changing, and medical mission must change too if it is to impact the next generation. That's why right now, MBF is working to make sure local medical ministries in lower- and middle-income countries are ready for the future through **radically innovative ideas and first of their kind programs**.

In Malawi, we are helping the medical ministries of local churches unite into a single country-wide medical network. Within the network, facilities will be able to share specialist doctors and surgeons, and grow more affordably and effectively. **The network will help the local ministries sustainably provide 21st-century standards of medical care and share the Gospel with millions over the coming years.**

THE MALAWI CHRISTIAN MEDICAL NETWORK INCLUDES:

**5**   
HOSPITALS

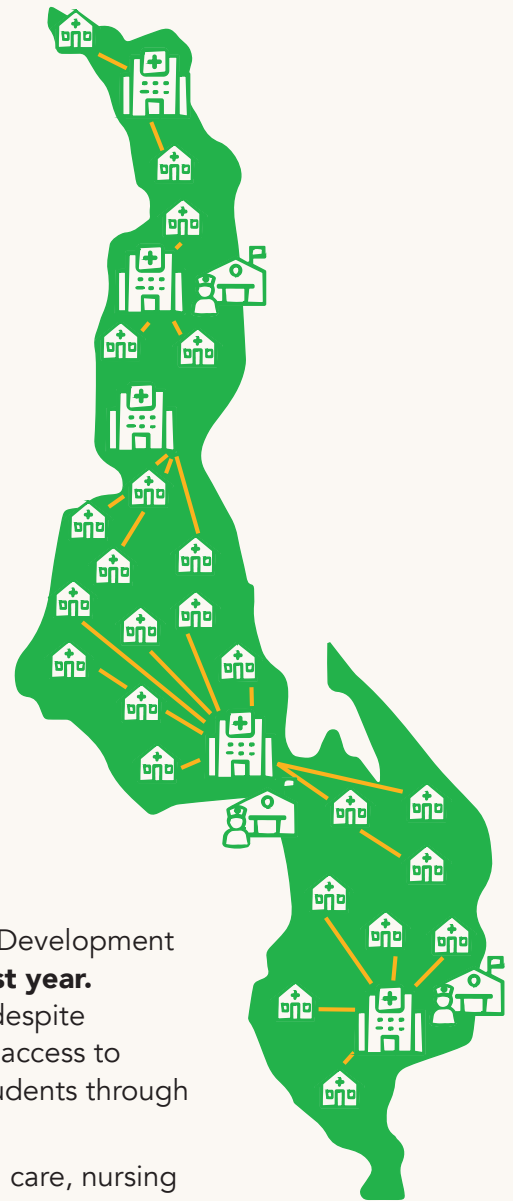
**3**   
NURSING SCHOOLS

**24**   
CLINICS

And that's not all. In Kenya and Malawi, MBF's Center for Global Nursing Development **introduced an e-learning platform to eight mission nursing schools last year.**

The platform provides a novel way for students to continue their studies despite the restrictions imposed by COVID-19 and gives the students and faculty access to international curriculum. The resources available to nurses and nursing students through the Center are expanding almost weekly.

MBF's donors are changing individual lives every day through the medical care, nursing education and spiritual ministry provided by our partners in Kenya, Malawi, Haiti and DR Congo. And, just as importantly, they are enabling fundamental changes needed to improve the standards of care and sustainability of these and similar medical ministries for tomorrow. **The changes we have begun in the past couple of years have the potential to revolutionize how we all think about medical mission.** Please join us in the journey.



## Partners in Hope and Healing

[www.mbf.org](http://www.mbf.org)

800.547.7627 | [hello@mbf.net](mailto:hello@mbf.net)  
9555 W. Sam Houston Pkwy South, Suite 170  
Houston, TX 77099  
[www.mbf.org](http://www.mbf.org)

